



Rig &
Vac Ltd.

72/76M-100 Flush-by Rig

■ **Introducing our latest flush-by model the 72/76M-100.**

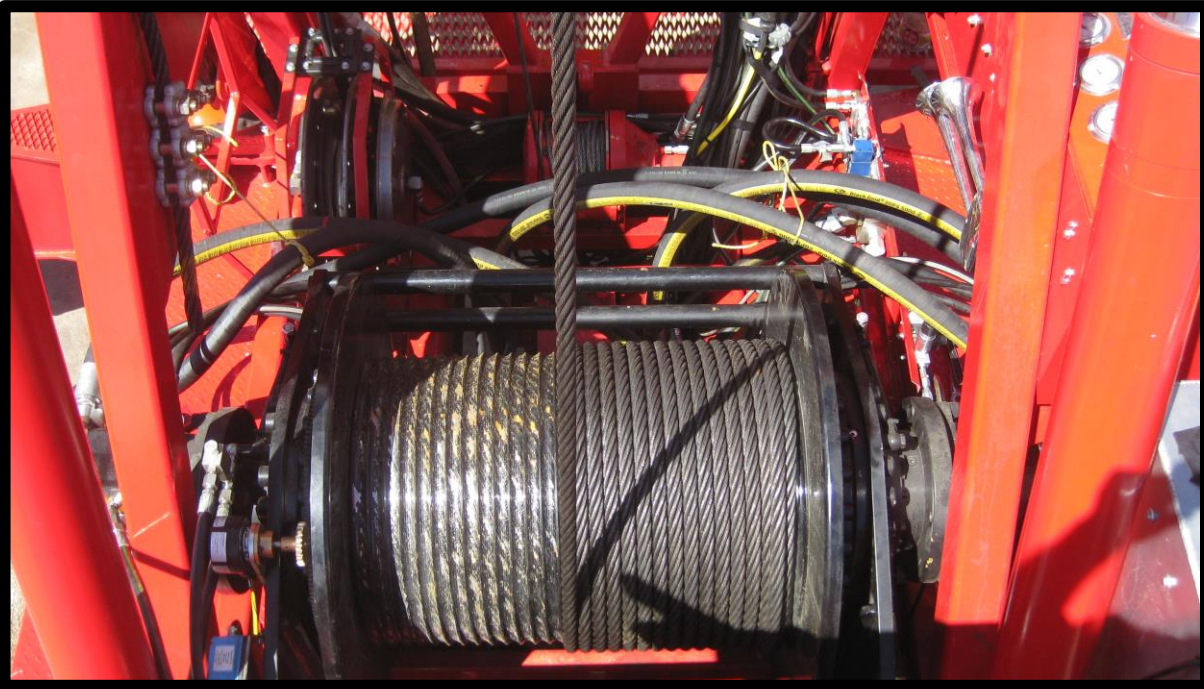
- 100,000 pound line pull - four part line
- 50,000 pound line pull - two part line
- 698 fpm
- 76 foot telescopic mast



Winches & Blocks

- Dinamic Oil SDR 2F178NS draw works
- 500' 1" 6 X 26 drill line
- Grooved drum for ease of spooling
- 50 ton double sheave traveling block
- Block easily splits to enable single sheave operation
- Dual motor/brake assemblies
- Selectable high/low range
- Drill line payout monitor
- Rigsmart crown/floor savers
- Pullmaster PL-5 auxiliary winch
- 175' 7/16" winch line c/w tail chain, safety hook, and snatch block



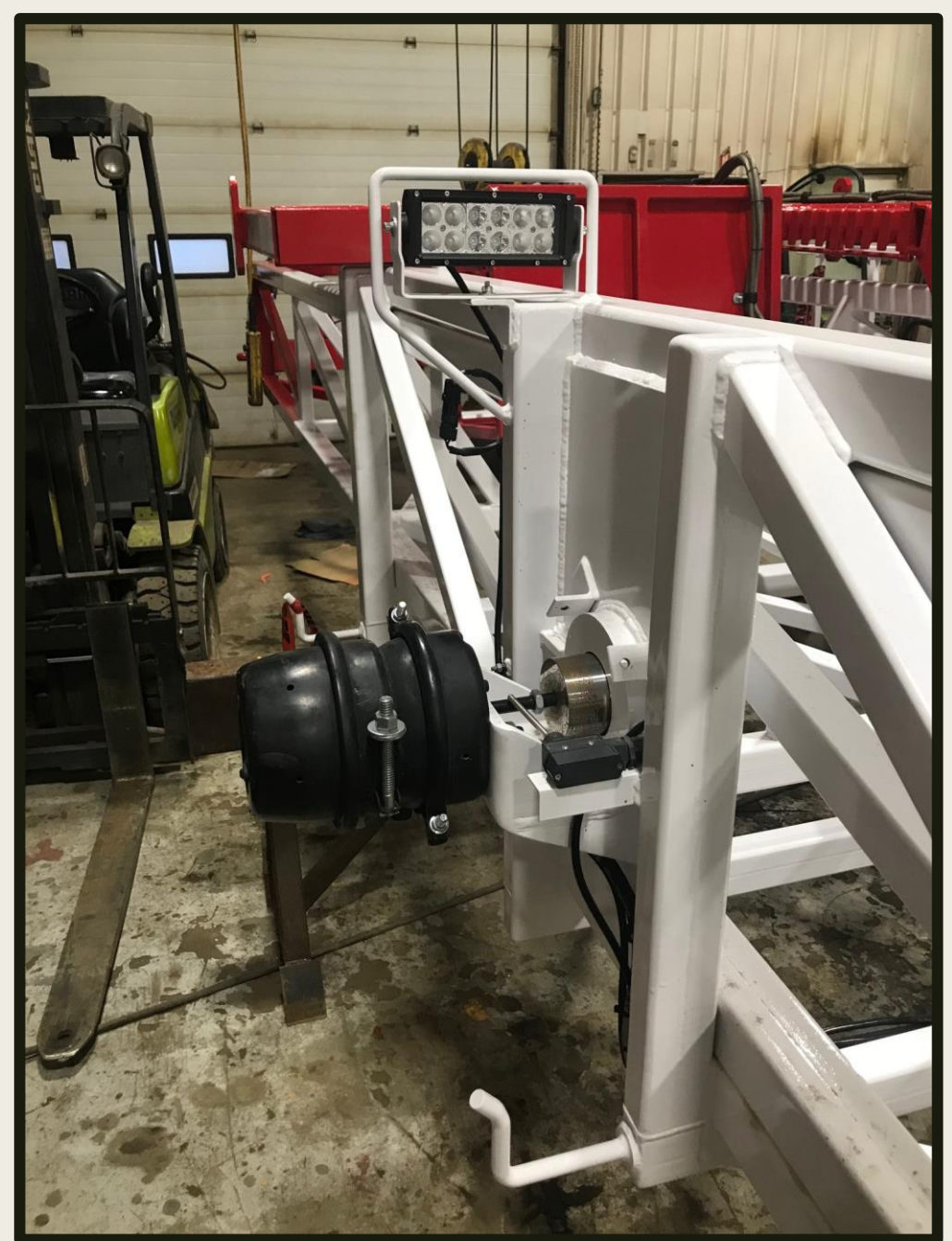




SS Rig Mast

- 100,000 # vertical static load
- 76' telescopic c/w spring applied/air released lock pins
- Two forward mounted hydraulic jacks
- Two rear mounted hydraulic jacks
- Fold our rear wing stabilizers c/w manual jacks
- Nylon crown sheaves
- Rod board c/w air operated rod transfer cylinder
- LED work lights & red strobe light on mast crown
- Access ladder and certified fall restraint

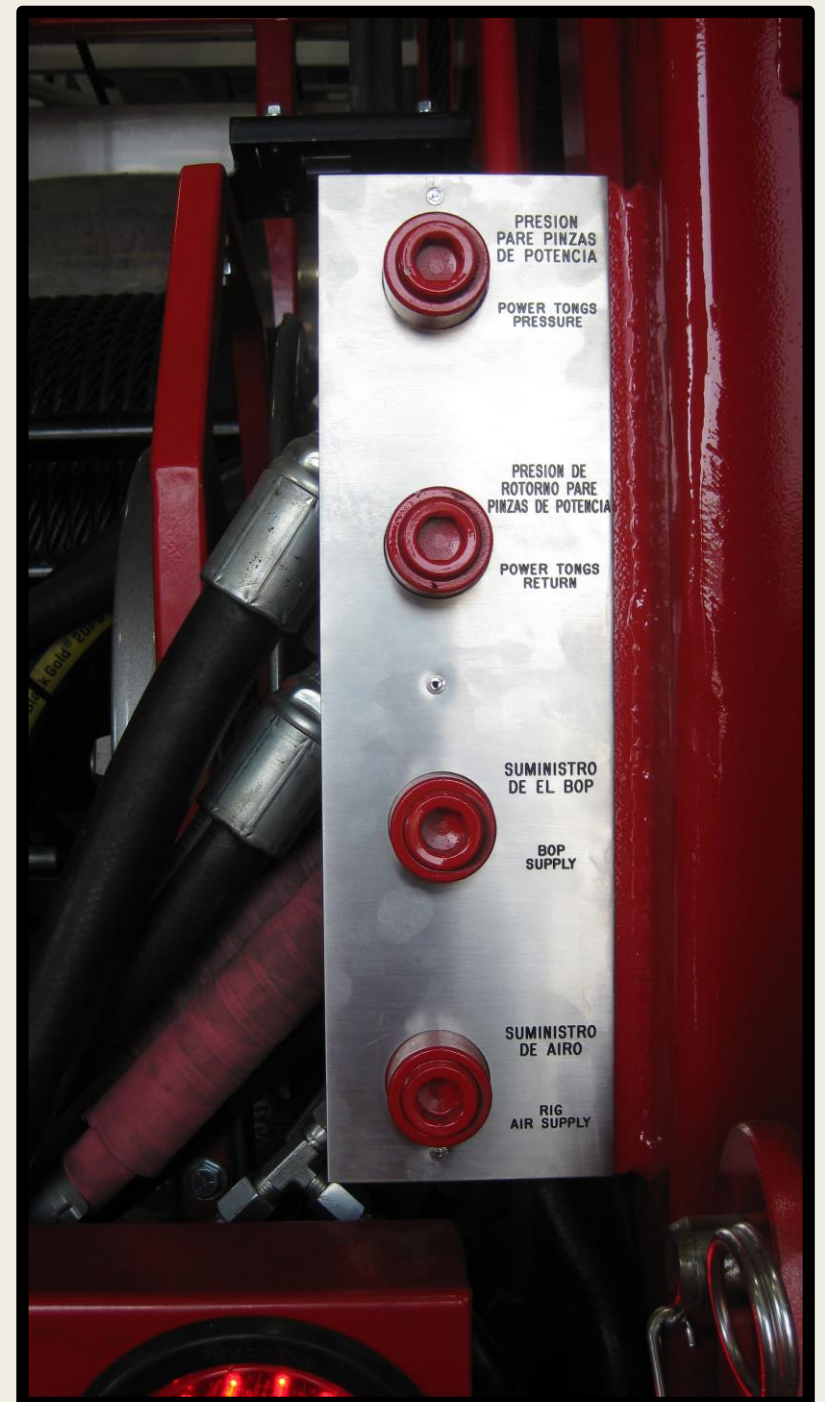






SS Rig A-Legs & Work Floor

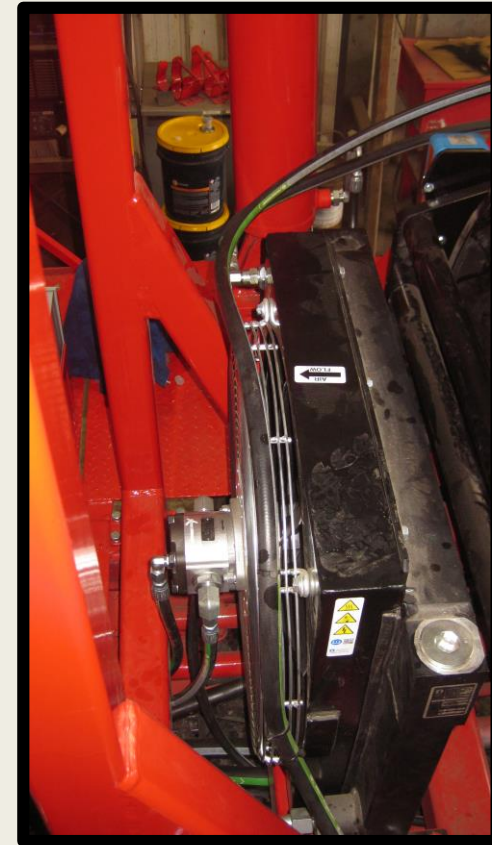
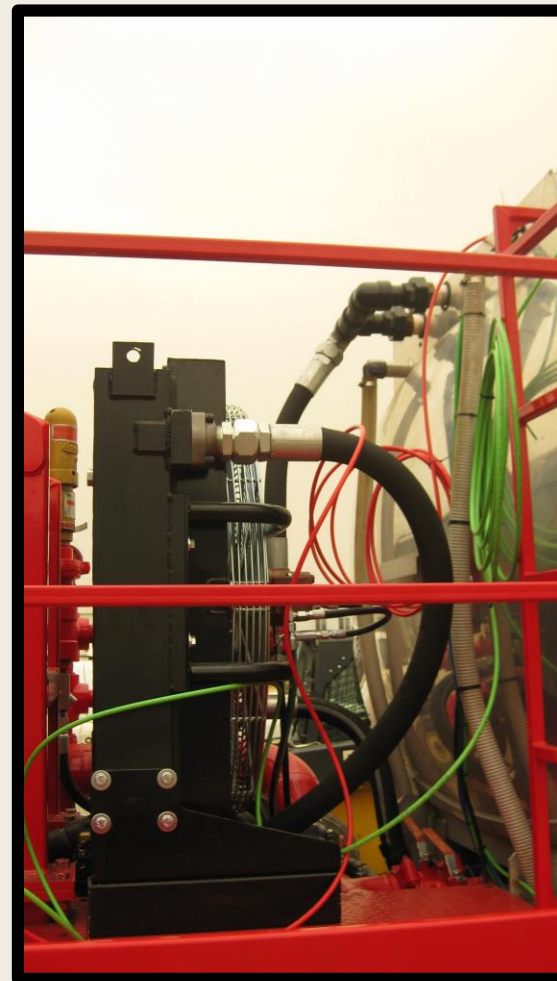
- Engineer designed and certified
- A-leg structure c/w main and auxiliary winch mounts
- Dead man anchor for drill line
- Picker mount and boom saddle
- Hose reel for hydraulics to rod board cylinder
- Tow hooks & junk racks
- Fold up working floor c/w fold up wings
- Stairs & railings
- Operator control panel
- Connection point for BOP, tongs, and air





Hydraulics

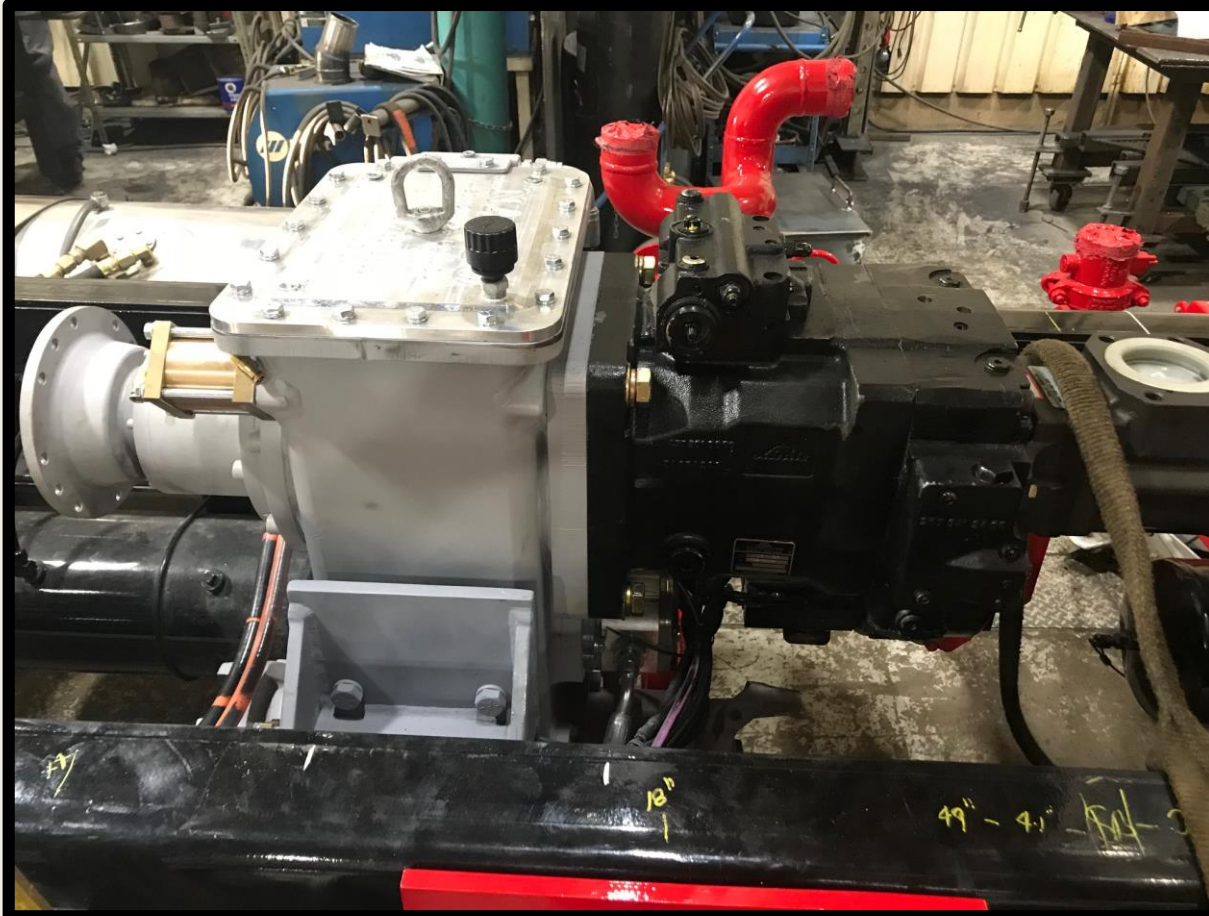
- **Pumps & Controls**
 - Split box mounted variable displacement piston pump for draw works
 - Dual piston motors for draw works
 - Split box mounted tandem vane pump for oil coolers & draw works flush system
 - Flush system consisting of gear motor, gear pump, & coupler
 - Muncie air shift PTO with tandem vane pump for rig up and tongs
 - Hydraulic oil cooler c/w hydraulic fan motor & adjustable temperature control
 - Draw works gear oil cooler c/w hydraulic fan motor & adjustable temperature control
 - Solenoid operated control valves for coolers & flush system c/w manual handles
 - Forward mounted control valve c/w power beyond to operate front jacks & Bowie pump
 - Control valve mounted in operator console for rig up functions & auxiliary winch
 - Joystick control & high/low selector for draw works in operator console
 - Control valve mounted in operator console for Fassi picker
 - Pressure filters on pumps & motors
 - Custom fabricated hydraulic tank c/w return filters and desiccant breather





Driveline

- 450 HP Namco splitter box c/w air shift for engage/disengage driveline
- Air shift for engage/disengage triplex pump drive
- 8 bolt PTO Muncie to operate rig up & tongs pump
- 4:1 chain case assembly for triplex pump
- Cab mounted controls for PTO, splitter box, & triplex drive



Triplex Pump

Gardner Denver TEE-3X5

Maximum BHP - 165

Maximum jackshaft speed – 300 RPM

Stroke length – 5"

Hardco plungers, Coors style valves

Standard 6" suction manifold

3" gear type feeder pump (hydraulic driven) Bowie

Fabricated low pressure piping including valves and fittings

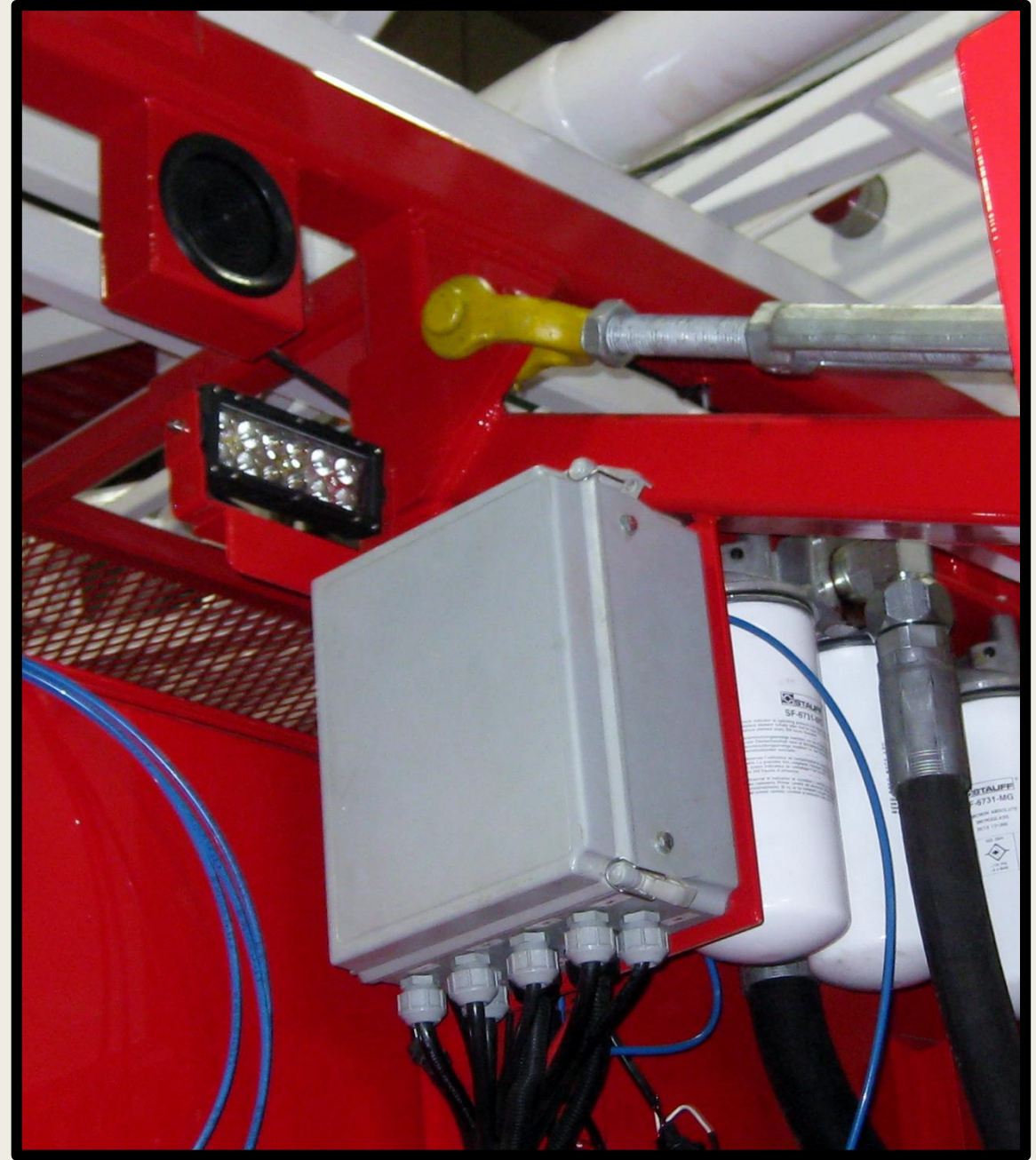
5000 PSI high pressure manifold c/w 2" ball valves, Oteco 2" relief valve, adjustable choke valve, gauges, unions, recirculating and relief valve hoses

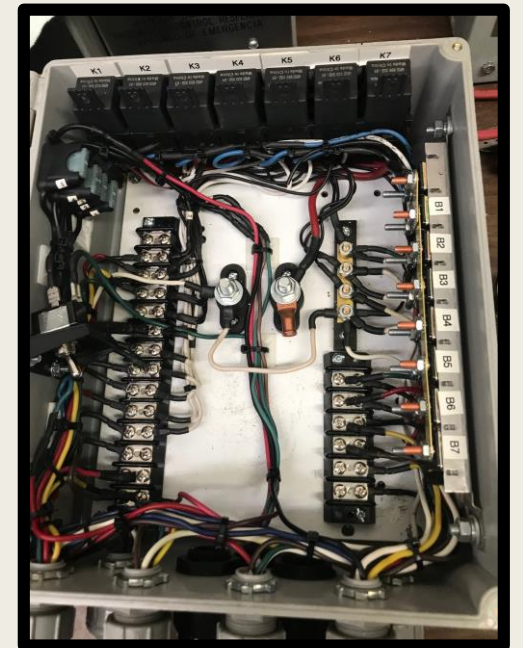




Controls & Electronics

- **Rear Mounted Control Panel**
 - Controls for all hydraulic functions of winches, mast, jack cylinders, BOP, & picker
 - High/low selector for main winch speed
 - Air control for mast lock pins
 - Remote hand throttle control
 - Switches for engine emergency kill & emergency horn
 - Full compliment of gauges to monitor hydraulic systems
- **Electronics & Air**
 - Dash mounted controls for splitter box, PTO, & triplex drives
 - Dash mounted switches for rig power, lights, & remote throttle
 - Dash mounted Titan display product tank level
 - Fiberglass enclosure housing relays, circuit breakers, & fuses
 - Rigsmart system consisting of crown saver, weight indicator, floor saver, line payout meter, & display
 - Rigsmart radio crown saver as back up

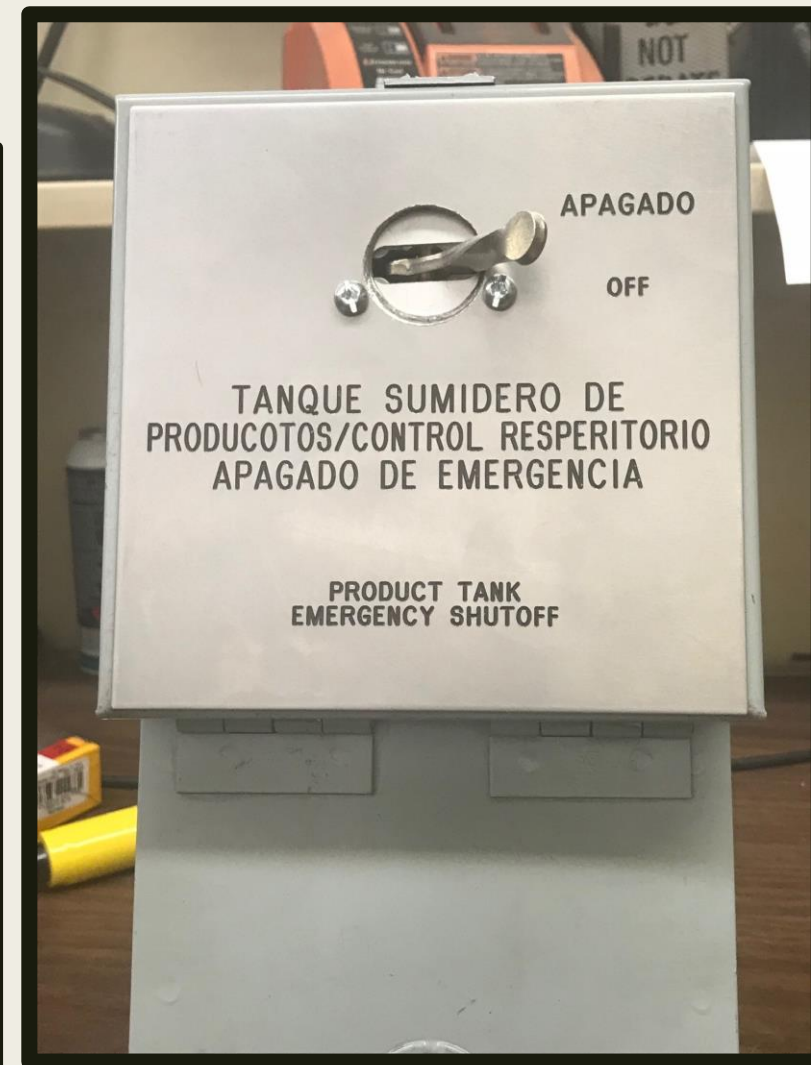




Product Tank

- Aluminum two compartment TC 406 spec
- Mounted as per manufacturer specs
- Tested and certified
- Air operated sump valve c/w shear and thermal protection
- Manual butterfly valve on suction piping
- Air operated vent valve c/w piping at rear of tank
- Air operated circulation valve c/w piping at front of tank
- Two Titan TD-80 tank level indicator probe and head assemblies
- Dash mounted display switchable between compartments
- Alarm horn mounted outside cab
- Tank controls at driver side front opens vent and circulation valves first, then sump valve, to prevent possible collapse of tank during off-load
- Emergency shut-off control at passenger side rear

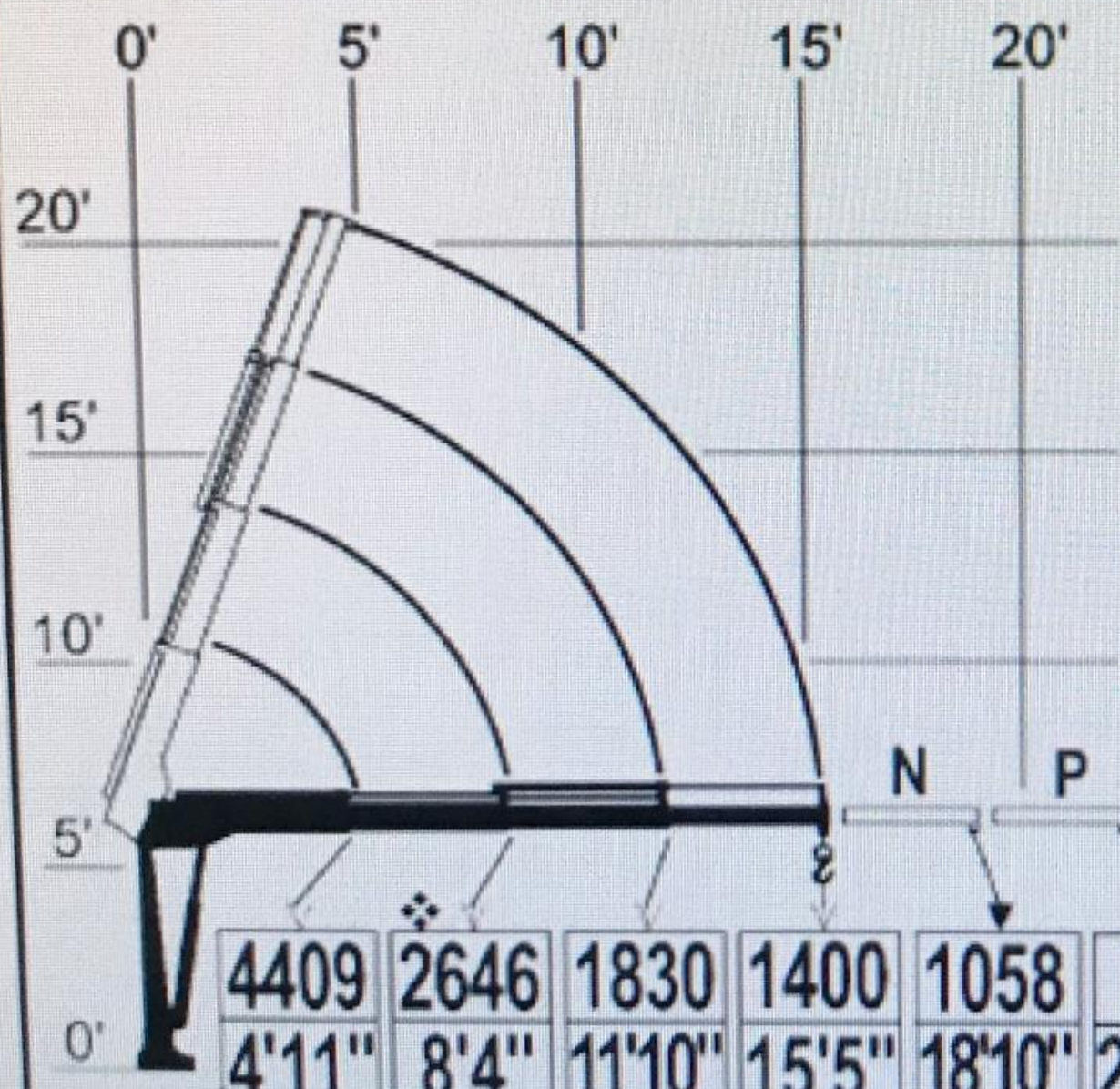




Knuckle Boom Picker

- **Fassi M30A.13**
 - Weight 573 lb/260 kg
 - Height 5' 3"
 - Rating at minimum reach 4409 lb/2000 kg
 - Rating at maximum reach 1400 lb/635 kg
 - Boom length fully retracted 4' 11"/1.50 m
 - Boom length fully extended 15' 5"/4.7 m





FASSI

M30A.13

❖ = Mmax 22050 lbs.ft

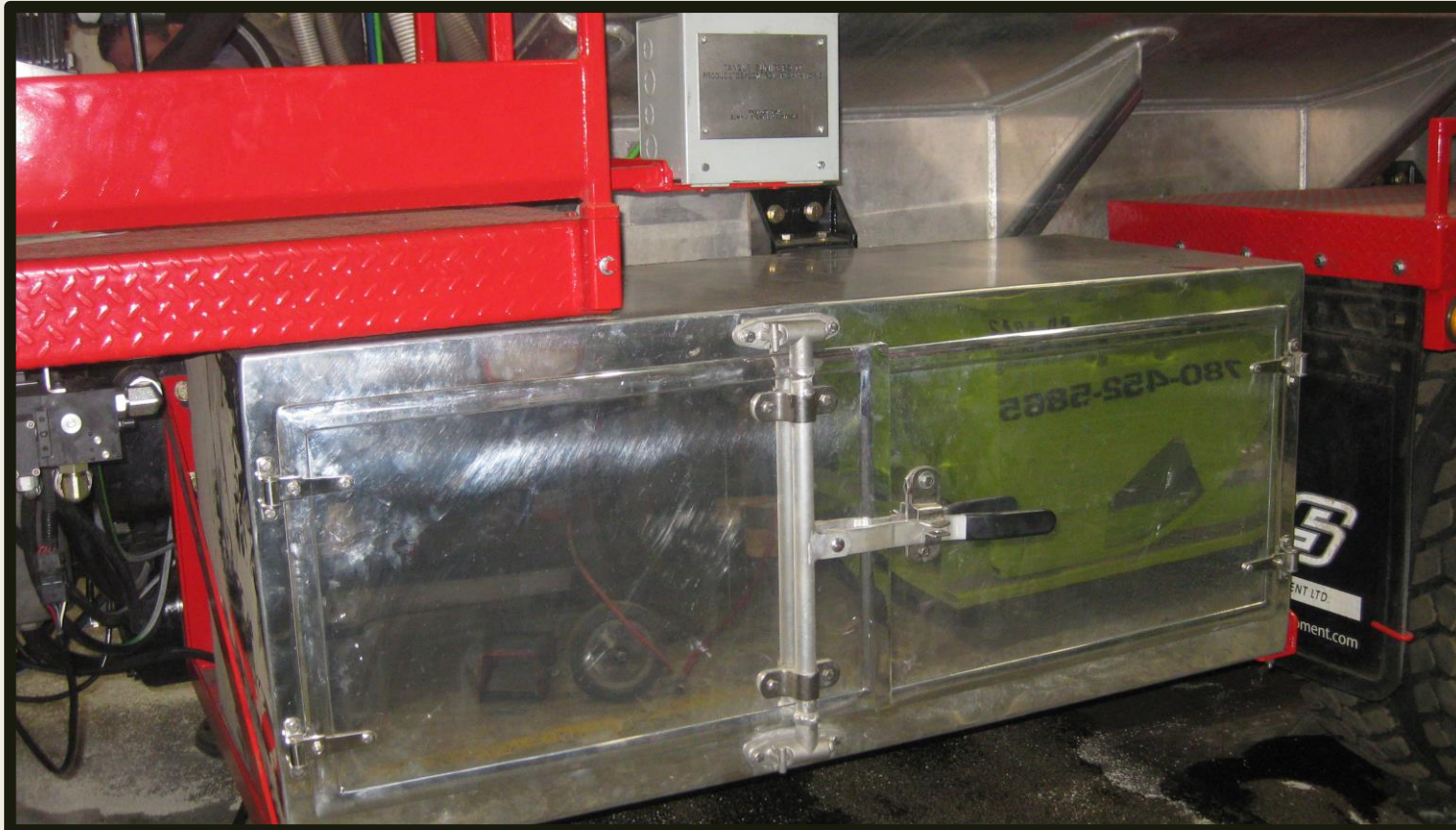
⚙ = Pmax 4409 lbs

4409	❖ 2646	1830	1400	1058	794	lbs
4'11"	8'4"	11'10"	15'5"	18'10"	22'4"	ft



Tool Boxes & Junk Racks

- Sizing and number of boxes as per customer's individual needs
- Varsol tank c/w lift out basket
- Mesh junk baskets, quantity and location as per customer request
- 12 volt lighting in all tool boxes
- Heater with 12 volt 2-speed fan available upon request







Certification

- All structural components manufactured according to engineered drawings
- Third party inspection/certification of mast, A-leg, headache rack, rear wing stabilizers & climbing device mount
- Manufacturers certification on load block and climbing device
- Tank manufacturers TC-406 certificate of compliance
- Transport Canada certification
- DOT National Mark sticker applied to completed unit

Innocar		TC Registration 25-980 www.innocar.ca				
Tank Mfr.	INNOCAR INC	Date of Mfr.	05-15	MDIN	SF232P	
Tank S/N	11467-2	TC Spec.	TC406			
MAWP (kPa)	21	Test P. (kPa)	34.5	Max. Payload (kg)	10000	
Design Temp. Range (°C)	-40	To	66	Max. Lading Density (kg/L)	1	
Max. Load. Rate (Lpm @ kPa)	1700	@	21	Heating Sys. Press. (kPa)	N/A	
Max. Unld. Rate (Lpm @ kPa)	757	@	-2 62	Heating Sys. Temp (°C)	N/A	
MATERIAL	Shell	AL5454-H32	Thick.	Top & Sides	Bottom	Heads
Lining	Heads	AL5454-O	Min. (mm)	3.84	3.84	4.39
N/A	Weld	ER-5356	Mfd. (mm)	4.75	6.35	5.50
Water Cap. (Litres)	5000	5000	N/A	N/A	N/A	N/A
Exp. Surf. Area (sq.m)	17	17	N/A	N/A	N/A	N/A
Assembler	25-0811	Cert. Date	05-19	VIN	1NKDX4TX4LR958358	

FREESTANDING FLUSHBY RIG PLAQUE		UNIT NO. 18-0027
OWNER VALPECA WELL SERVICES		DATE OF MANUFACTURE MAY 2019
MAST MANUFACTURER SS RIG AND VAC INC. - Nisku, Alberta, Canada		
MODEL NO. 78-100-F8	DESIGN SPECIFICATION API Spec 4A, Parts E4, E6, E2, E2E	
SERIAL NO. 9986	GUY LINE REQUIREMENTS MIN. 8000 LBS. 4/5 WIRE	
NOM. HEIGHT 78 ft. / 23.8 m	A 5/8" DIAMETER	
WELL SPACING "W" 80 ft. / 24.4 m	B 9/16" DIAMETER	
MAX. STATIC HOOK LOAD - VERTICAL	MAX. WIND CAPACITY 600 OR GROUND	
4 LINES 100,000 lbs. / 44,480 daN	UNEXPECTED: 69 mph/119km/h/60 knots	
8 LINES 50,000 lbs. / 22,240 daN	EXPECTED: 86 mph/138km/h/76 knots	
MAX. STATIC HOOK LOAD - SLANT		
4 LINES N/A	MAX. ROD WEIGHT: 20,000lbs./8,570kg	
8 LINES N/A	MAX. PIPE WEIGHT: N/A	
<p>GRAPH LEGEND:</p> <p>○ WITH EMPTY PRODUCT TANK NO ROOS</p> <p>● WITH EMPTY PRODUCT TANK FULL ROOS</p>		
<p>FREESTANDING FLUSHBY RIG REQUIREMENTS:</p> <p>1. FLUSHBY RIG DESIGNED TO BE OPERATED WITHOUT EXTERNAL GUY LINES.</p> <p>2. OUTRIGGERS ARE TO BE PINNED INTO POSITION. INITIAL PRETENSION IN LOAD LINES 1000 LBS. GUY LINES 800 LBS.</p> <p>3. GUY LINES MUST MEET API SPECIFICATIONS 7A AND 8A, AS WELL AS ALL INDUSTRIAL HEALTH AND SAFETY REGULATIONS. SEE OPERATING MANUAL FOR INFORMATION AND DETAILED OPERATION INSTRUCTIONS.</p> <p>4. ALWAYS HANG ROOS SYMMETRICALLY IN THE ROD BOARD.</p>		
<p>CERTIFIED BY: KODIAK ENGINEERING LTD.</p>		<p>FILE NO. 18-08-9986</p>
		<p>DATE MAY 2019</p>
<p>CAUTION</p> <p>ACCELERATION OR IMPACT, ALSO ROOS, WIND LOADS, AND INCREASED WELL SPACING WILL REDUCE THE MAXIMUM RATED STATIC HOOK LOAD</p>		





Flush-By & Rod Rigs
Pump & Pressure Trucks
Chemical & Air Excavators
Winch Tractors & Picker Trucks

For more information please call:

SS Rig & Vac Ltd.

780.979.9987

or

Email: admin@ssrig.com

Web Site: ssrigandvac.com

SS Rig & Vac Ltd.

Nisku, Alberta

Canada