

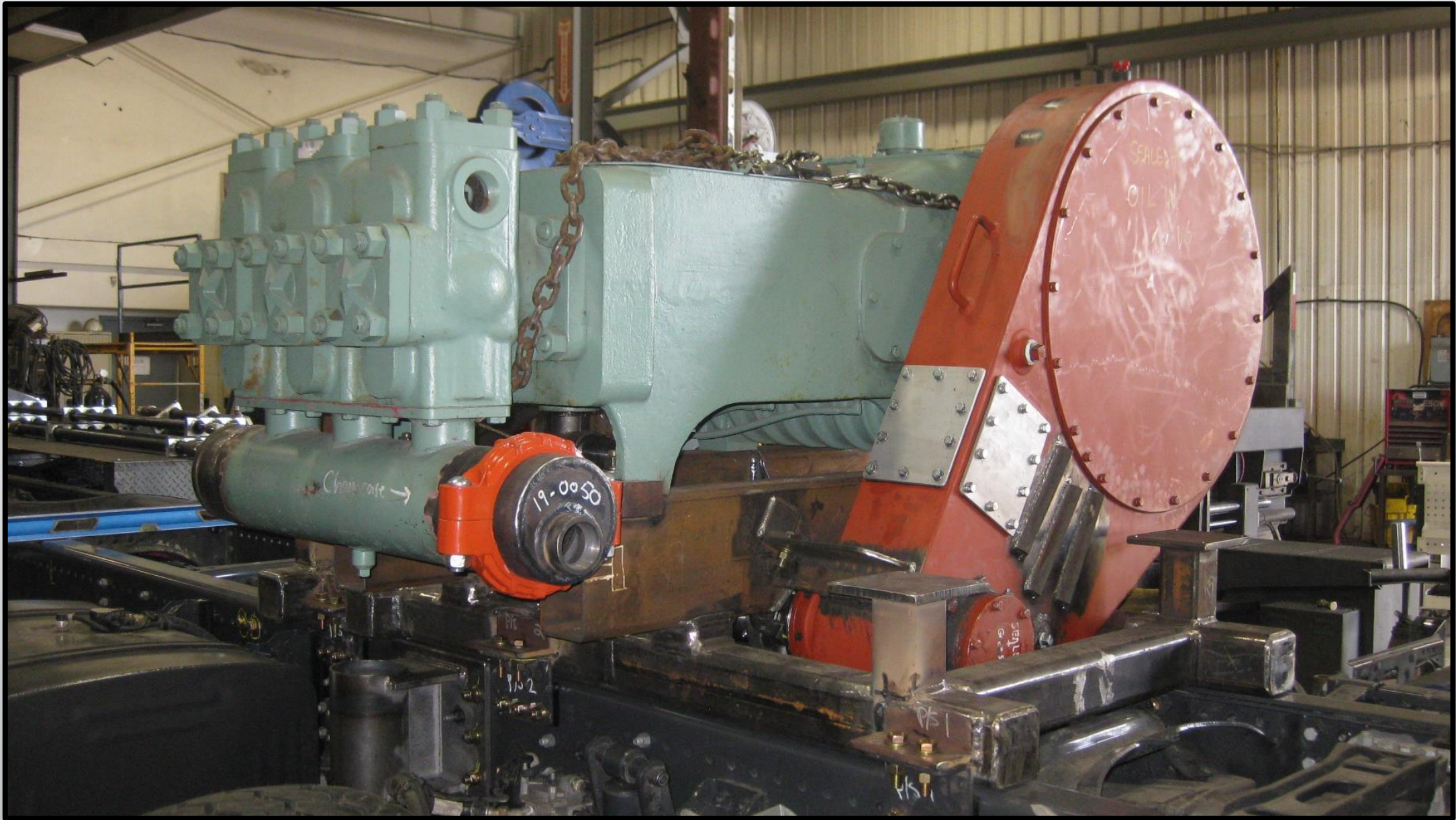


Kuwait 58' Flush-by Rig



Triplex Pump

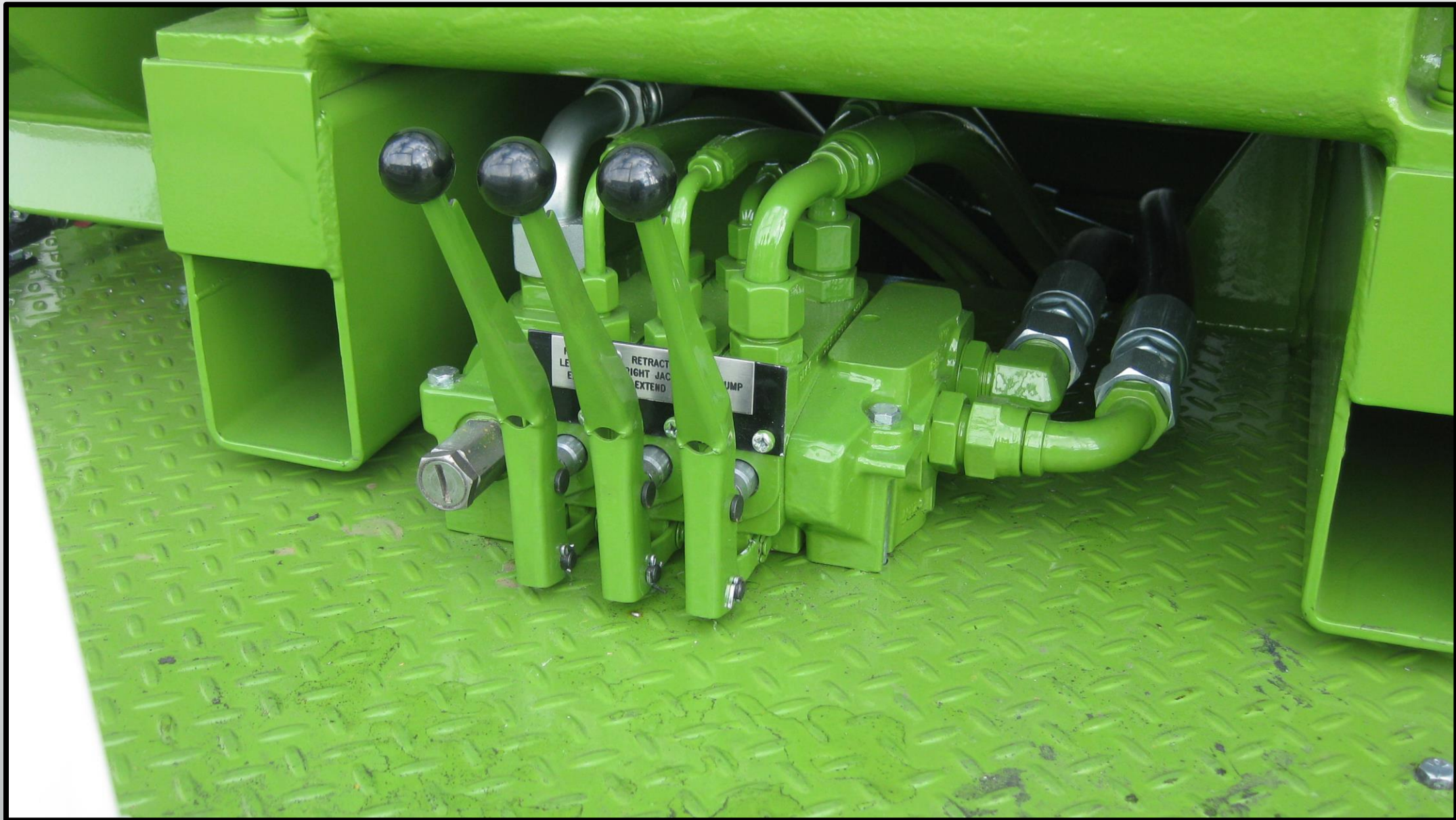
- Gardner Denver TEE-3X5
 - Maximum BHP - 165
 - Maximum jackshaft speed – 300 RPM
 - Stroke length – 5”
 - Hardco plungers, Coors style valves
 - Standard 6” suction manifold
 - Mounted on head ache assembly c/w load line, tie backs, cable guard
 - 3” gear type feeder pump (hydraulic driven) Bowie standard, T&E optional
 - Fabricated low pressure piping including valves and fittings
 - 5000 PSI high pressure manifold c/w 2” ball valves, Oteco 2” relief valve, 2” choke valve, gauges, unions, recirculating and relief valve hoses
 - Standard drive is shaft through splitter box



Triplex Pump And Chain Case On Skid



Feeder Pump And Connections

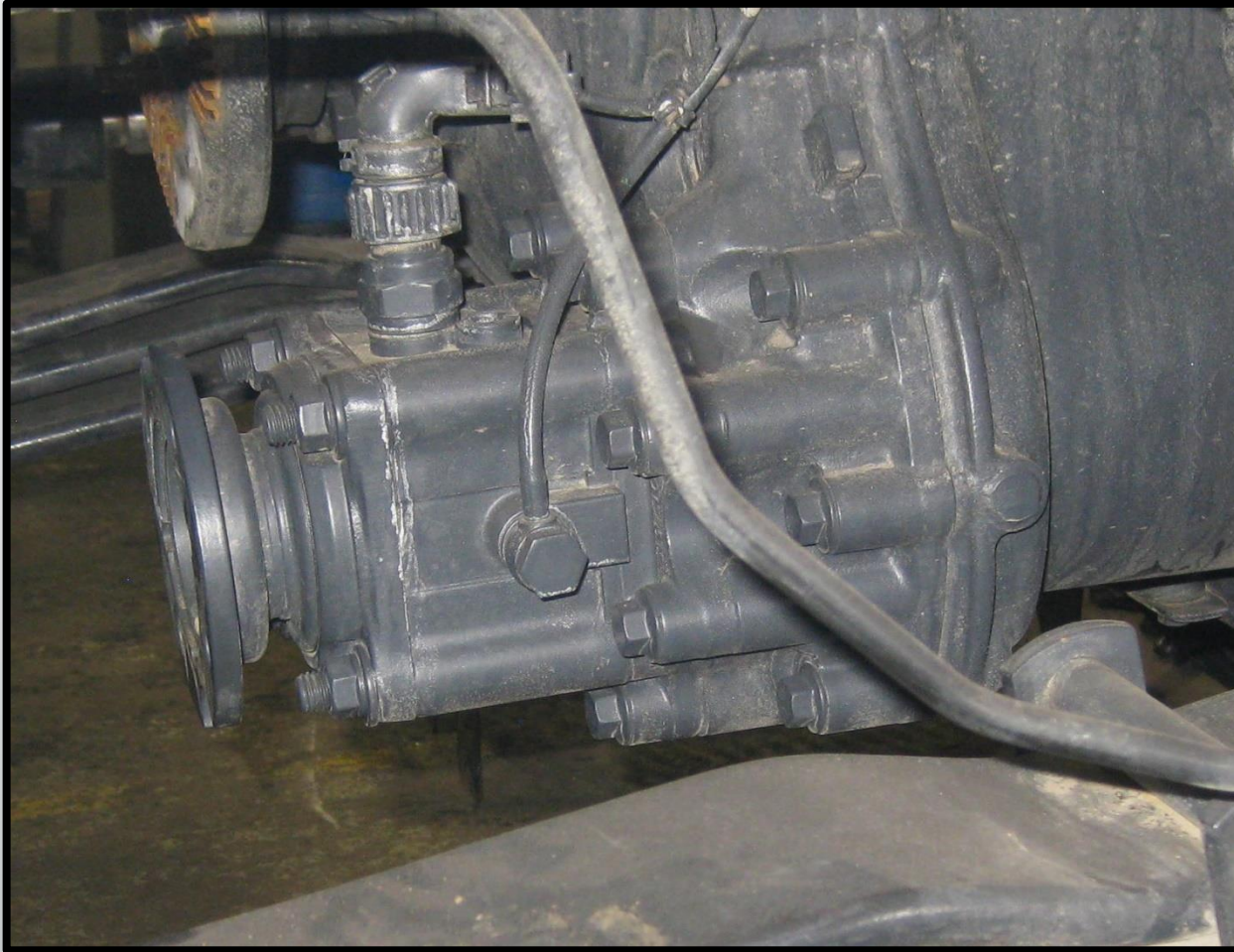


Feeder Pump And Front Jack Controls

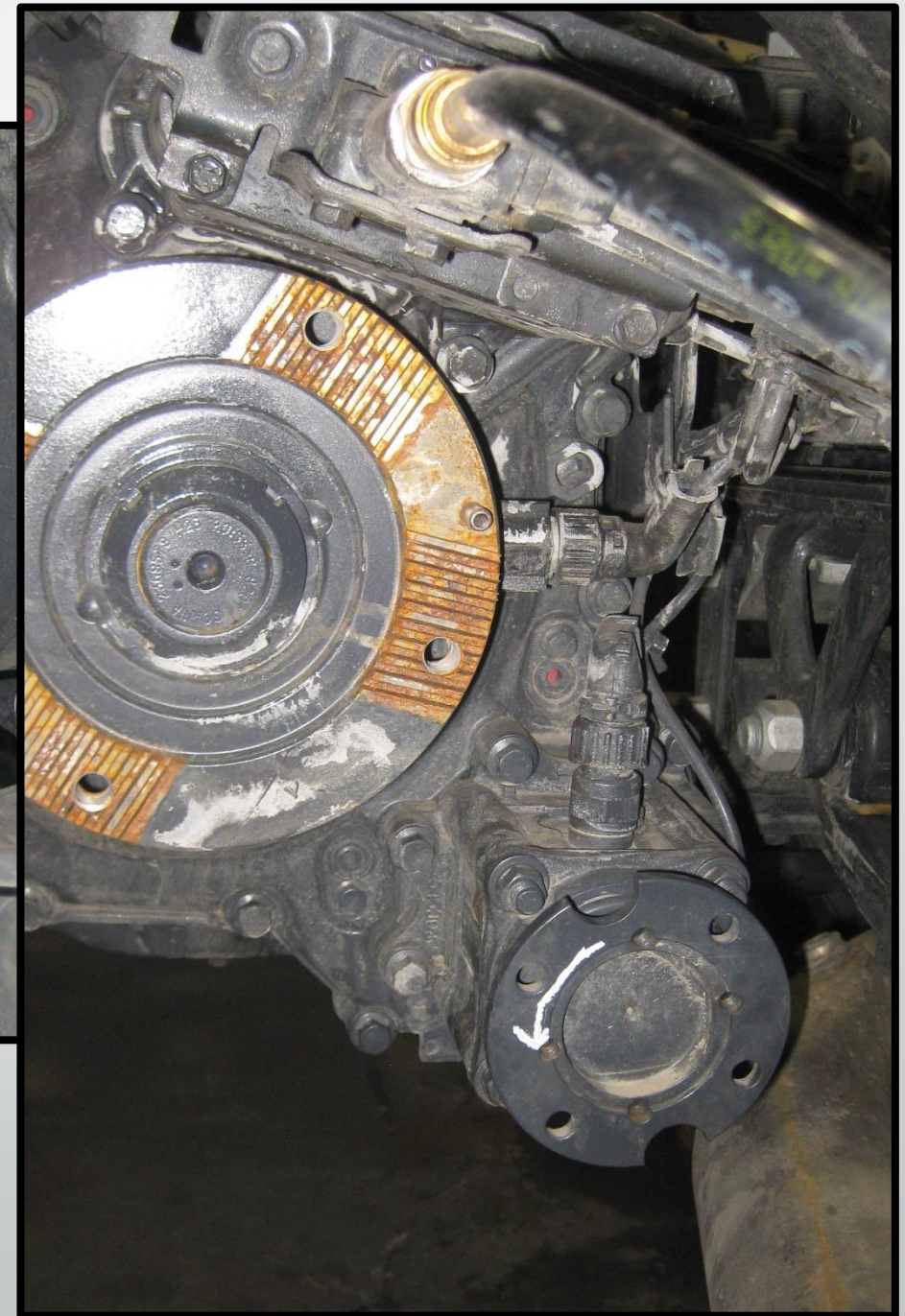


Driveline

- Standard 8 bolt PTO for hydraulic system
- Optional 6 bolt PTO to run feeder pump and power tong circuits separately
- Standard PTO Muncie, Chelsea upon request
- Namco 450 HP splitter box
- 4:1 chain case assembly (splined shaft)
- Modifications to existing drive line as needed
- Supply drive line for triplex



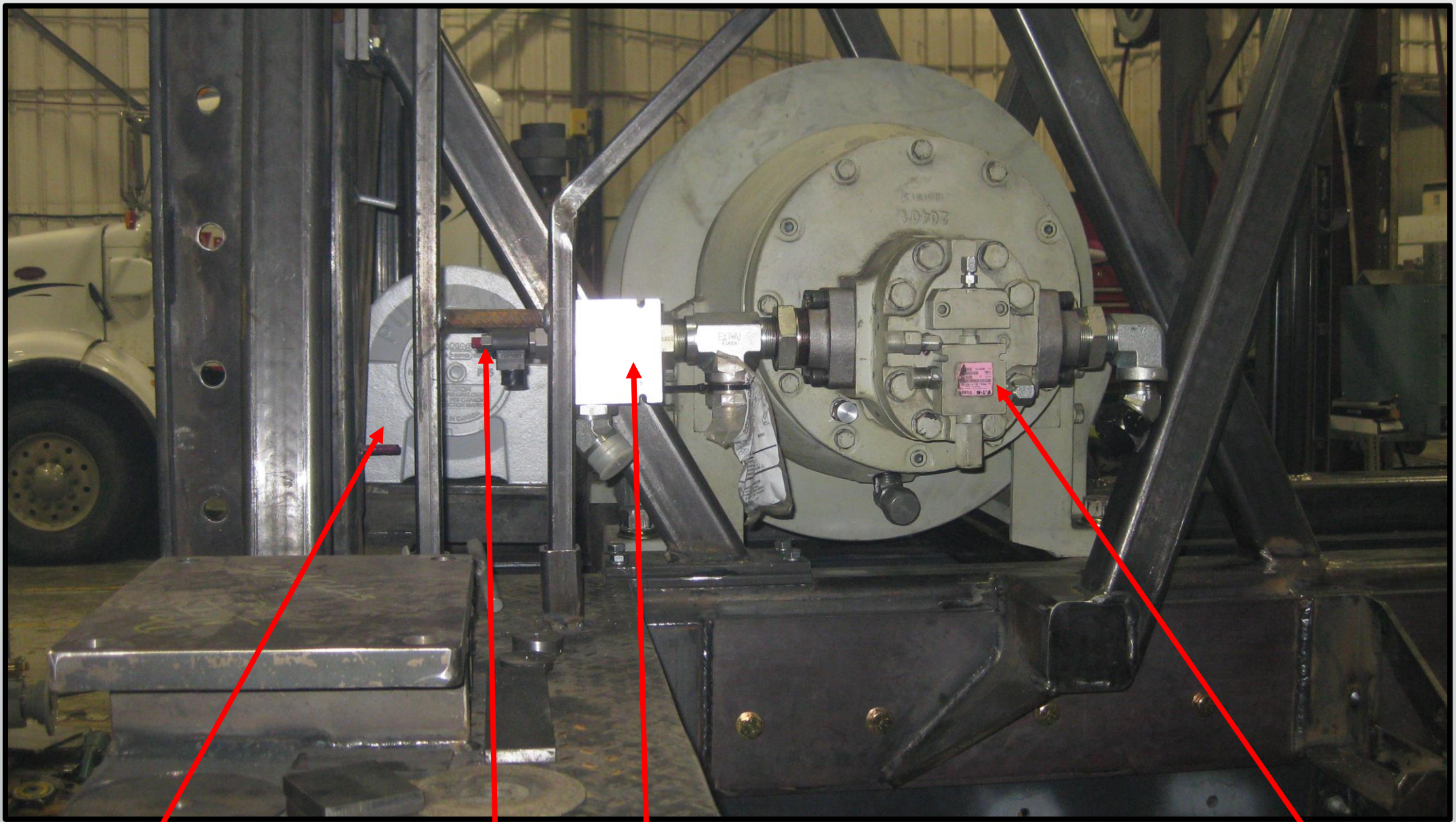
This Particular Unit Came With Two Factory Installed Scania PTO





Winches

- Pullmaster HL-25 main winch c/w factory grooved lagging and 2 speed clutch
- 350' $\frac{3}{4}$ " Power-Pac (or compatible) drill line
- 25 ton single sheave weighted traveling block
- Custom extra high speed boost circuit c/w selector valve
- Pullmaster PL-5 auxiliary winch
- 130' $\frac{3}{8}$ " winch line c/w tail chain, safety hook, and snatch block



PL-5 Auxiliary Winch

Crown Saver Dump Solenoid

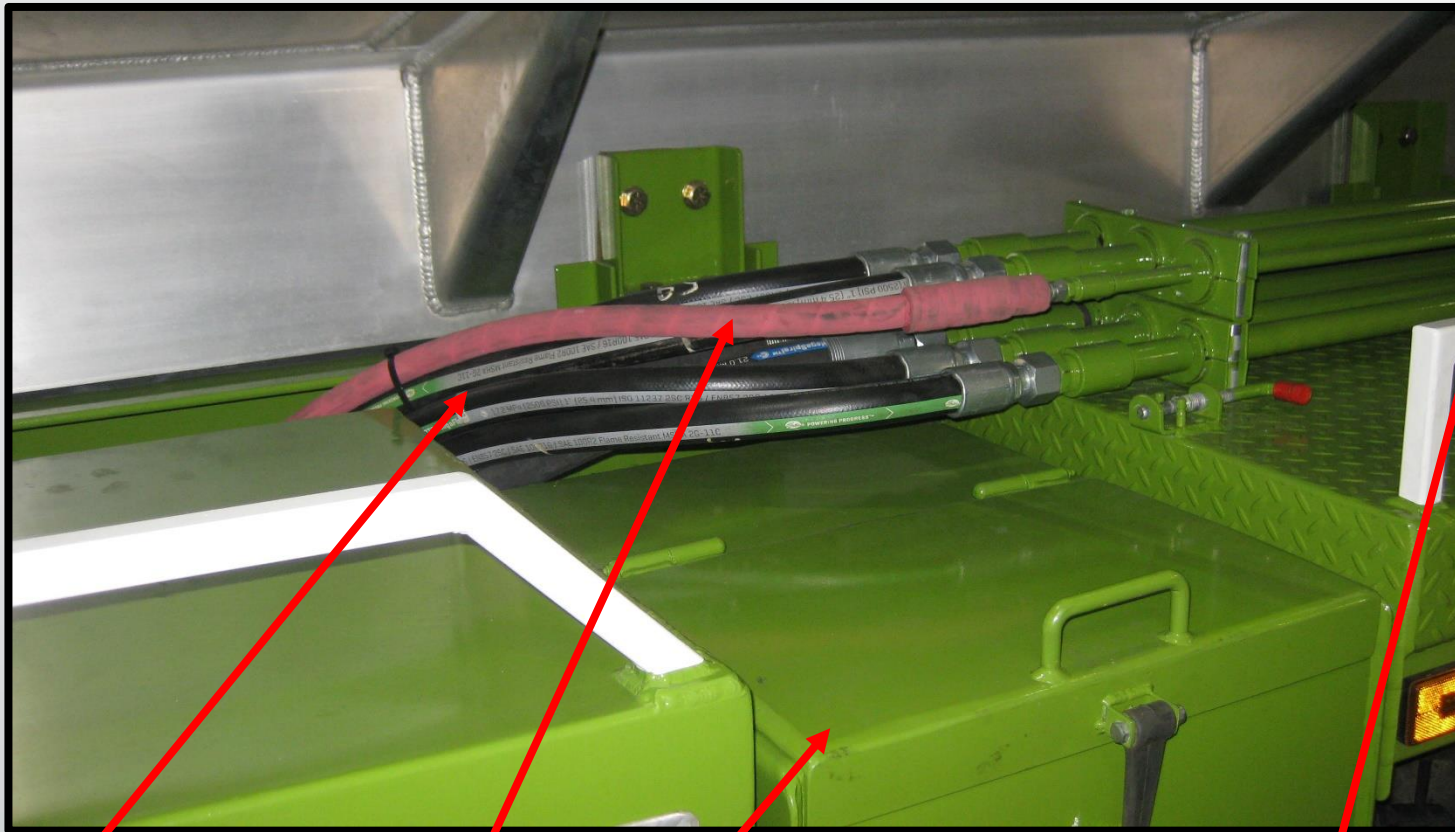
Emergency Manual Override

HL-25 With Two Speed As Well As Custom Boost



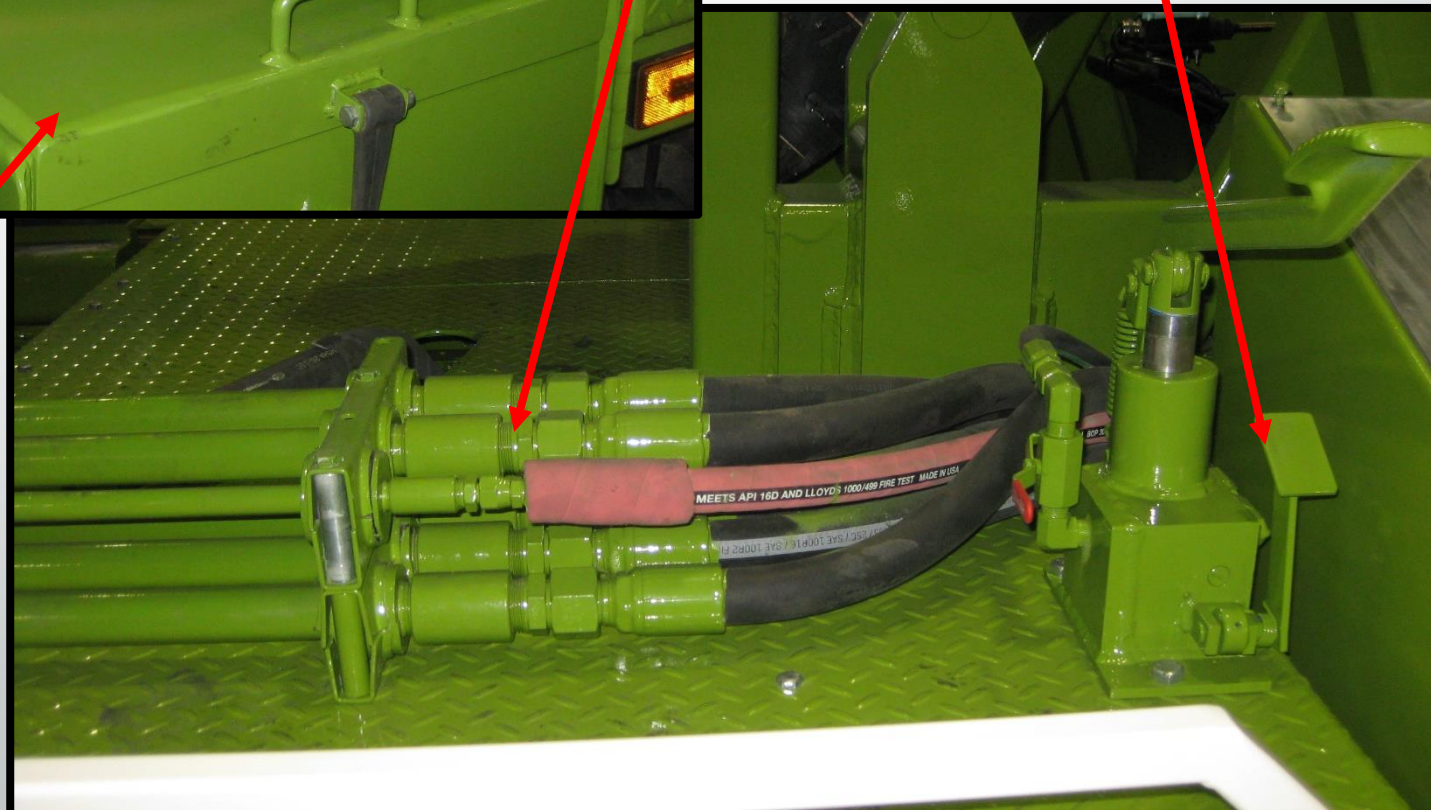
Hydraulics

- Pumps & Controls
 - Tandem Denison vane pump, front section main winch, rear auxiliary winch, mast, rig-up
 - Single Denison to run feeder pump and power tong circuits separately
 - Hydrocontrol HC-D40 main winch control
 - Commercial VG-20 multibank controls for other functions
 - Oil cooler with dual 12 volt DC fans and adjustable controller
 - Standard hydraulic reservoir c/w return filters included in front product tank
 - Steel piping on top of frame, connecting hoses both ends means shorter hose lengths and less chance of leakage in hard to reach spots



Front Hose Connections

Emergency Manual Pump To Raise Mast Allowing Cab To Tilt

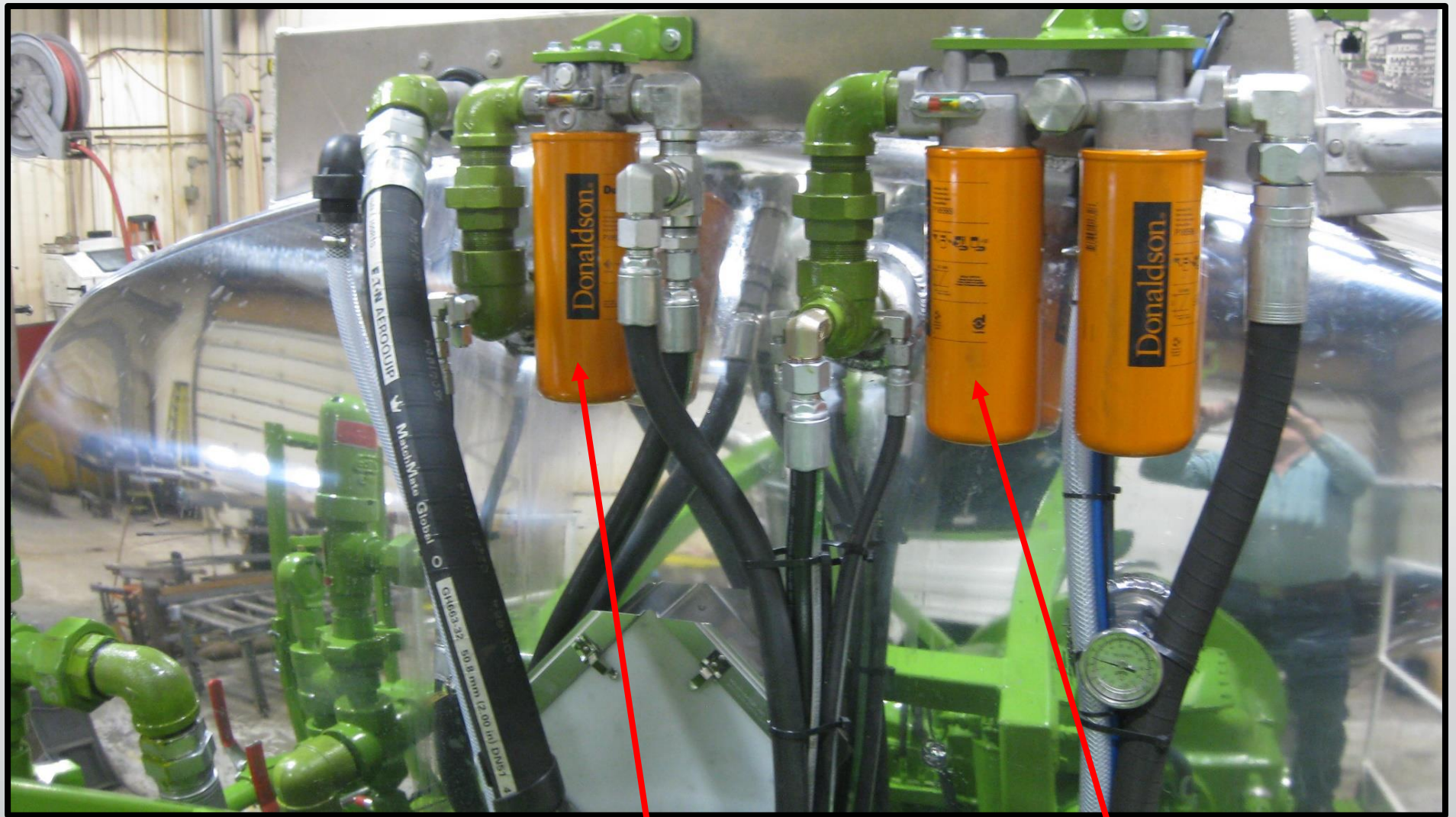


Certified BOP Hose

Rear Hose Connections

Varsol Tank

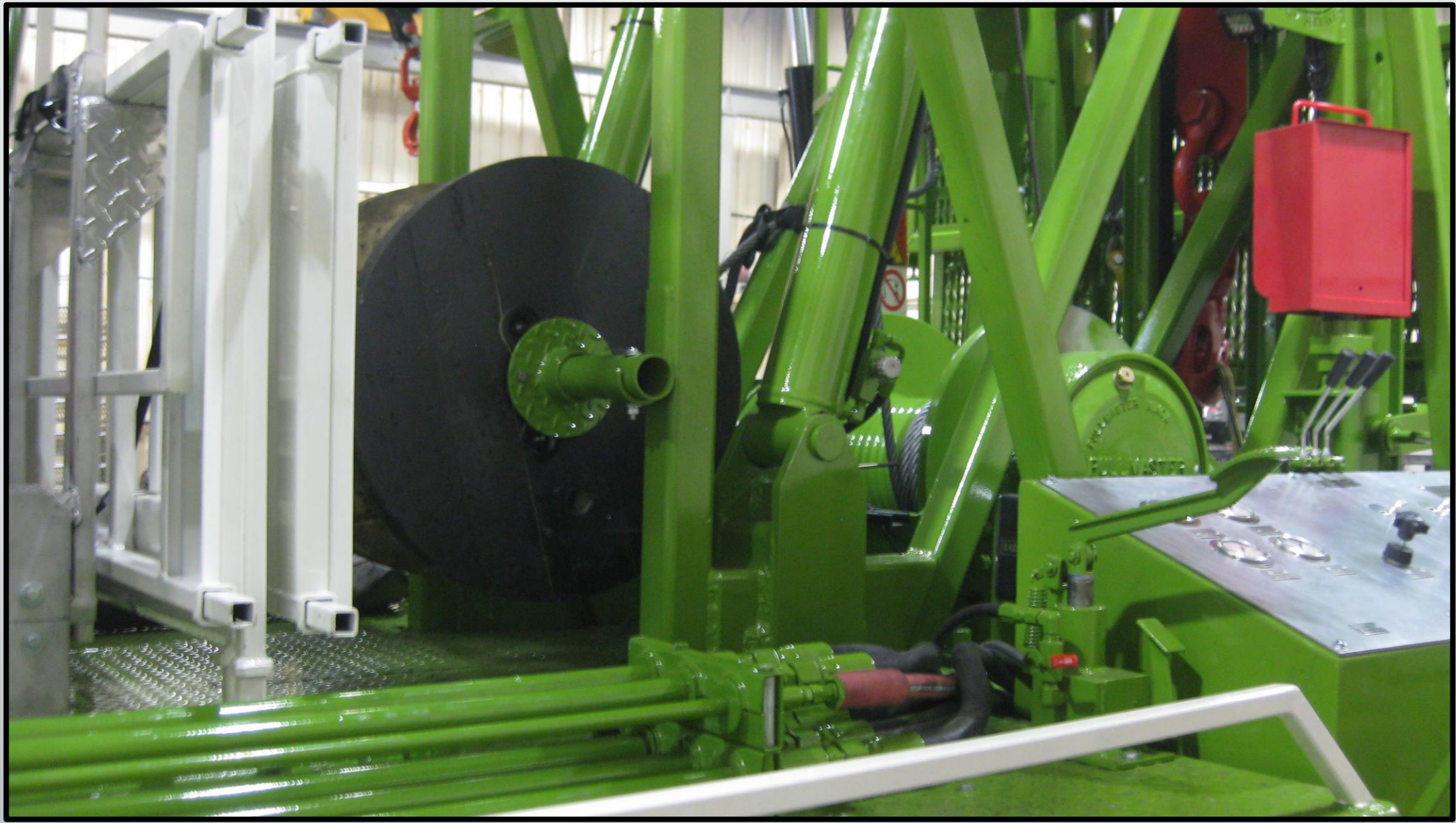
**Hydraulic Piping
Top Of Fender For Easy Service**



**Standard Integral
Hydraulic Tank**

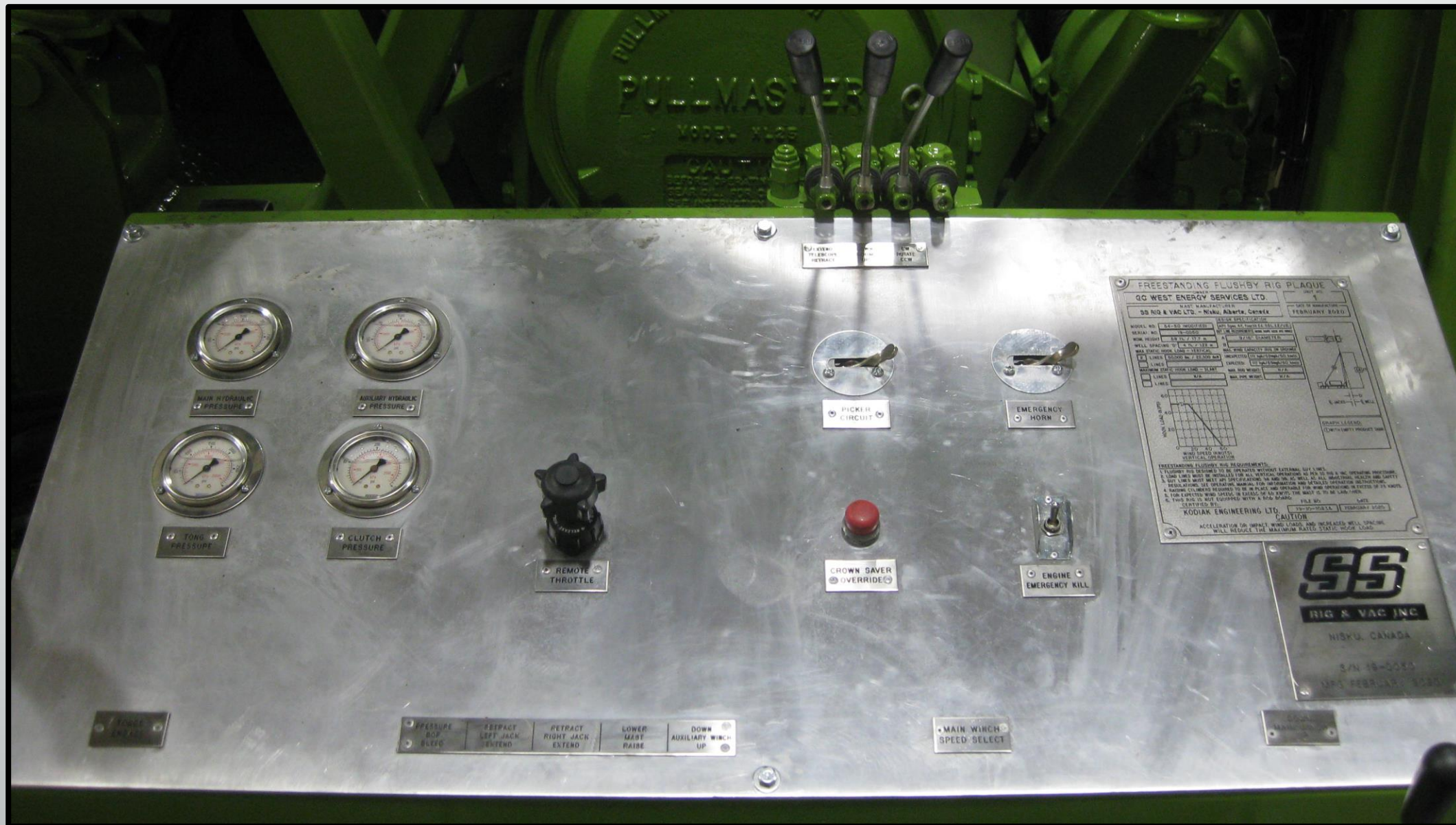
**Return Filter
Optional Separate
Tongs/Feeder Pump**

**Standard Dual
Return Filters**



Controls

- Rear Mounted Control Panel
 - Standard panel with removable cover
 - Controls for all hydraulic functions of winches, mast, jack cylinders, feeder pump, BOP, picker
 - High/low selector for main winch speed
 - Rig functions/picker selector
 - Remote throttle control
 - Switches for engine emergency kill, emergency horn, crown saver override
 - Pressure gauges for main & auxiliary hydraulics, main winch shift clutch pressure, tongs pressure





Electrical & Electronics

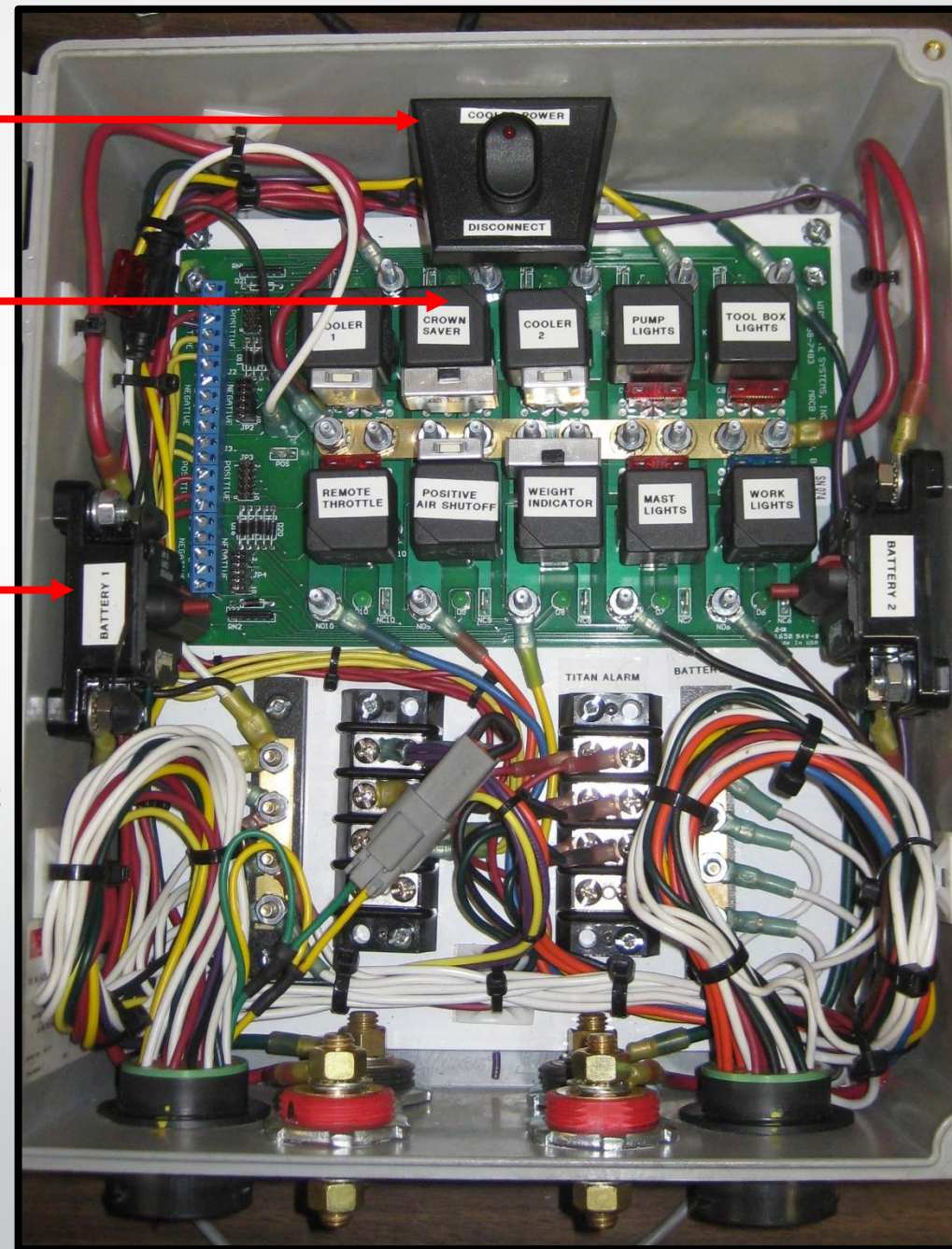
- Fiberglass enclosed power control module (PCM) containing fuses, breakers, relays, cooler controller
- Cab mounted switches connected to PCM
- 150 Amp resettable circuit breaker to protect power feed from batteries to PCM
- Weatherproof connections from PCM to connecting harnesses
- Electronic weight indicator c/w panel lights, deflection bar, and analog gauge
- Dash mounted display for Titan TD-100 tank level indicator
- Overfill alarm for Titan level indicator
- Mast mounted LED work lights
- LED work lights on A-legs and work floor
- OEM lights as required on sides and rear
- High mount OEM lights to clear work floor



**Easily Accessible
Weatherproof
Power Distribution Center
(PDC)**

Manual BOP Hand Pump

- Oil Cooler
Override**
- Replaceable
Relays**
- Resettable
Circuit Breakers**
- Green LED Lamp
On Each Relay
Illuminates When Circuit Hot**





Weight Indicator With LED Lighting



Display For Titan Tank Level Gauge

**Switches For Rig Functions
Clearly Marked**





SS Rig Mast

- 54' API 4F spec, 50,000 lb/22,300 daN vertical static load
- Nylon crown sheaves
- Ladder assembly
- 85' climbing devices
- Mast load lines





SS Rig Rear Bumper & A-Legs

- A-leg structure c/w main and auxiliary winch mounts
- Standard dead man anchor
- Picker mount and boom saddle
- Tow hooks
- Fold up working floor c/w fold up wings
- Adjustable working floor T-bar
- Control panel and tool box mounts
- Mount for weight indicator
- Mounting tubes for leveling jacks
- Connection point for BOP, tongs, and air
- Engineer designed and certified



Large Work Floor With Railings

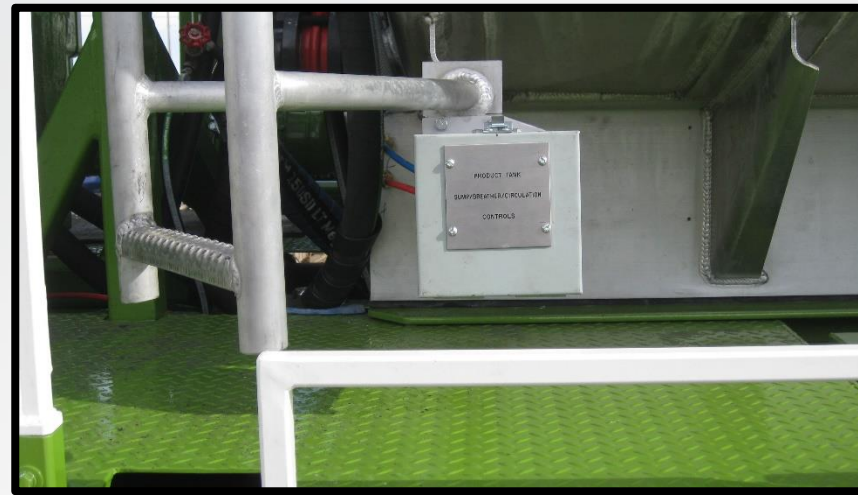
Single Sheave Load Block

Jack Support Stands

Tool Box With LED Lighting

Product Tank

- Standard aluminum flush-by tank
- 55.5 bbl product compartment
- 8.64 bbl front compartment for hydraulic oil
- TC 406 spec
- Air operated sump valve c/w shear and thermal protection
- Manual butterfly valve on suction piping
- Air operated vent valve c/w piping at rear of tank
- Air operated circulation valve c/w piping at front of tank
- Drain hoses to prevent build-up of fluid on top of tank
- Heavy duty steel fenders
- Titan TD-100 tank level indicator probe and head
- Single tank control at driver side front opens vent and circulation valves first, then sump valve, to prevent possible collapse of tank during off-load
- Emergency shut-off control at passenger side rear closes all valves



**Cab Protection
From Load Lines**

**Twin Fan
Oil Cooler**



Polished Aluminum TC406 Tank

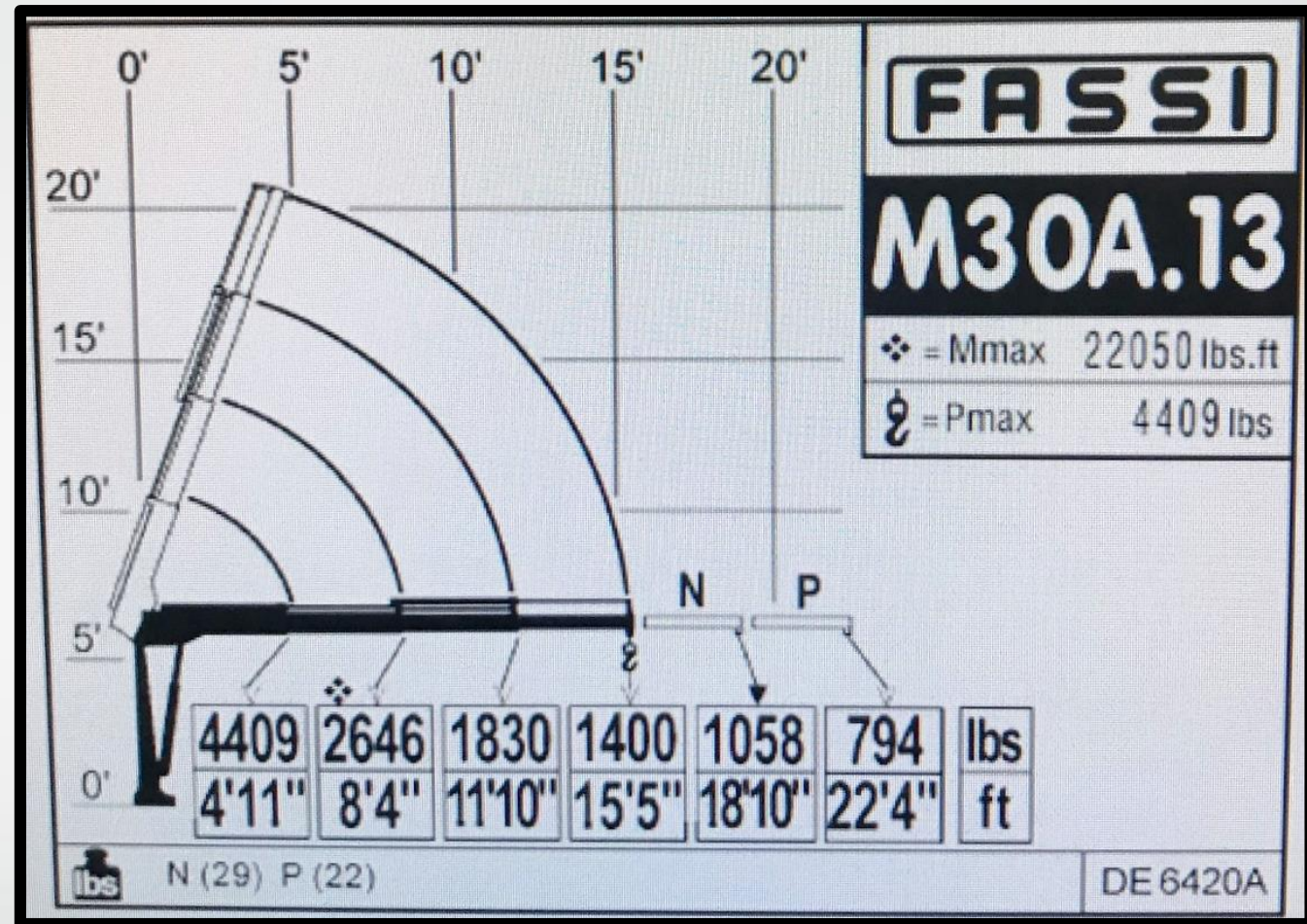
**Double Tool Box
With LED Lighting**

Varsol Tank

Heavy Duty Steel Fenders

Fassi M30A Knuckle Boom Picker

- Fassi M30A.13
 - Weight 573 lb/260 kg
 - Height 5' 3"
 - Rating at minimum reach 4409 lb/2000 kg
 - Rating at maximum reach 1400 lb/635 kg
 - Boom length fully retracted 4' 11"/1.50 m
 - Boom length fully extended 15' 5"/4.7 m







Certification

- Third party inspection/certification of mast, A-leg, headache rack, and climbing device mount
- Engineer certified to API 4F specs
- Manufacturers certification on load block and climbing device
- BOP hose manufacturers certification
- Tank manufacturers TC-406 certification
- SS Rig & Vac tank installation and testing certification
- DOT National Mark sticker applied to completed unit



58' FLUSH-BY RIG

For more information please call:

SS Rig & Vac Ltd.

780.979.9987

or

Email: admin@ssrig.com

Web Site: ssrigandvac.com

SS Rig & Vac Ltd.

Nisku, Alberta

Canada

